



HeaRT-Headache, Resilience and Trauma in Adolescence: a multicentre Italian project

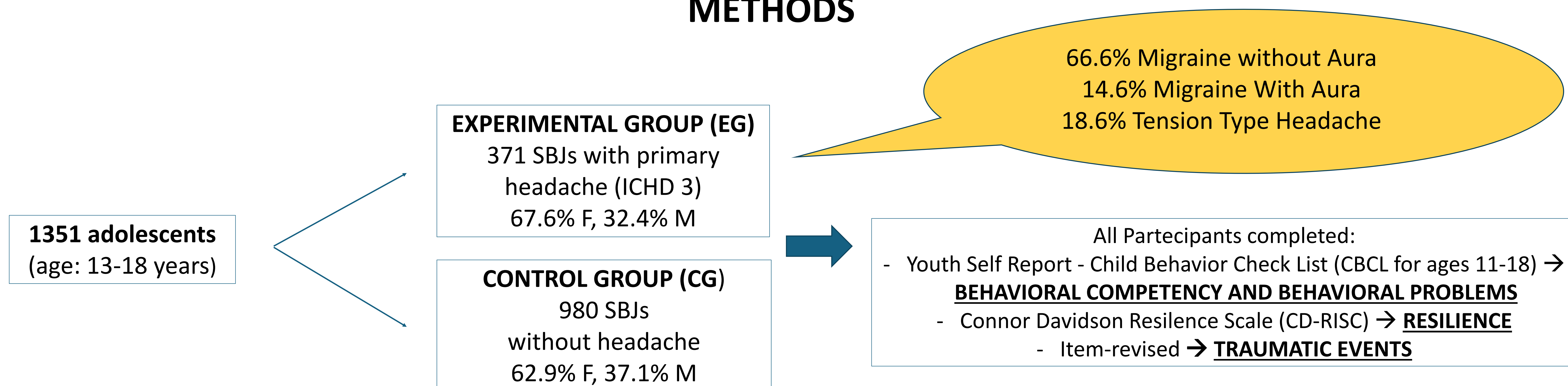
Laura Papetti¹, Noemi Faedda², Ilaria Sabuzi², Nicola Grelli², Paola Verdecchia², Chiara Celino², Samuela Tarantino², Martina Proietti Checchi¹, Massimiliano Valeriani¹, Pierfrancesco Alaimo Di Loro³, Elisabetta Tozzi⁴, Pamela Silva⁴, Gennaro Saporito⁴, Francesca Pistoia⁴, Vittorio Scirucchio⁵, Valeria Misciagna⁵, Licia Grazzi⁶, Mattia Canella⁶, Carmela Bravaccio⁷, Irene Toldo⁸, Martina Locallo⁸, Maria Reimers⁸, Vincenzo Raieli⁹, Noemi Vaccaro⁹, Martina Quartana⁹, Valeria Savarino⁹, Daria Pandolfo⁹, Giulia Abrate¹⁰, Chiara Caprioli¹⁰, Francesca Re¹⁰, Michela Vigna Taglianti¹⁰, Tomaso Oliaro¹⁰, Sara Simona Racalbuti¹⁰, Antonella Versace¹⁰, Vincenzo Guidetti²

1. Developmental Neurology, Bambino Gesù Children's Hospital, IRCCS, Roma; 2. Department of Human Neuroscience, Sapienza, Roma; 3. GEPLI Department, LUMSA University, Roma; 4. Department of Life, Health and Environmental Sciences University - Headache Center Abruzzo, L'Aquila; 5. Children Epilepsy and EEG Center, PO San Paolo ASL, Bari; 6. Neuroalgology Dpt, Headache Center, IRCCS Fondazione Istituto Neurologico C. Besta, Milano; 7. Department of Translational Medical Sciences, Child and Adolescent Neuropsychiatry, University of Naples Federico II, Naples; 8. Department of Woman's and Child's Health, University Hospital of Padova; 9. Child Neuropsychiatry Unit Department, Pro.M.I.S.E. "G D'Alessandro", University of Palermo; 10. Pediatric Headache Centre, Department of Pediatric Emergency, Regina Margherita Children's Hospital, Turin.

AIMS

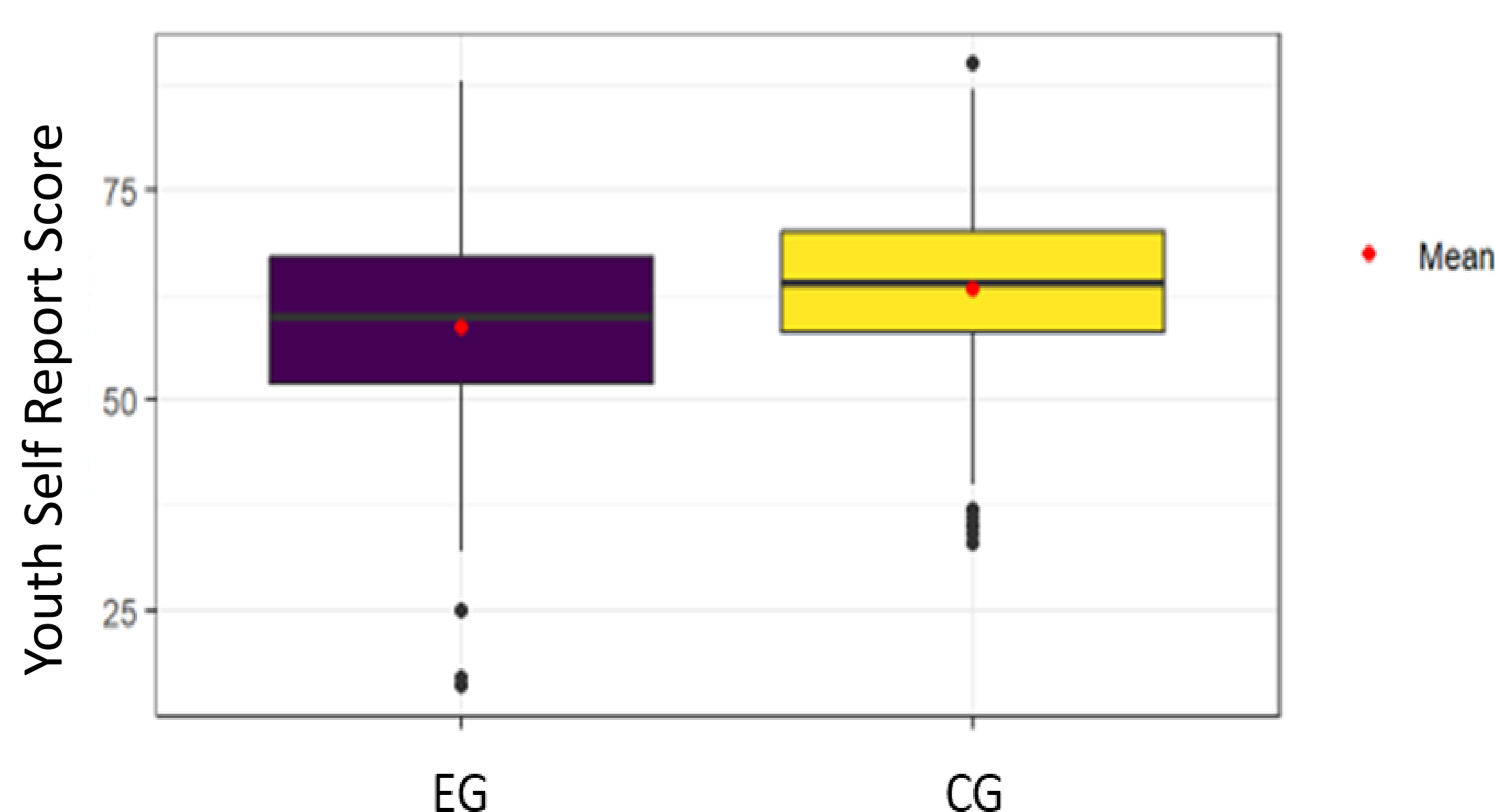
This project involves several juvenile headache centers in Italy, and aims to explore levels of resilience in adolescent subjects between 13 and 18 years of age, with and without primary headache, in relation to levels of psychopathology and trauma.

METHODS

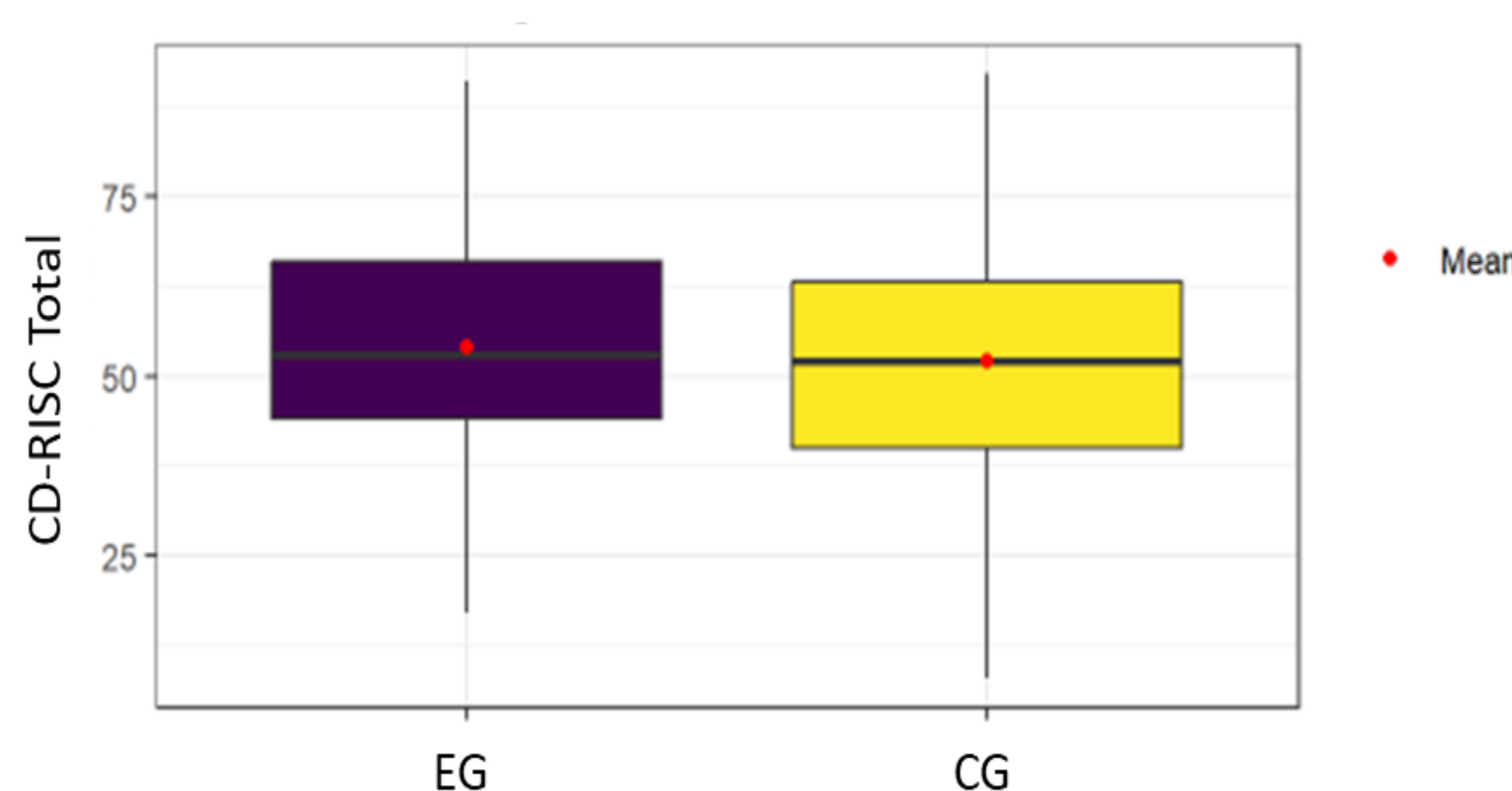


RESULTS

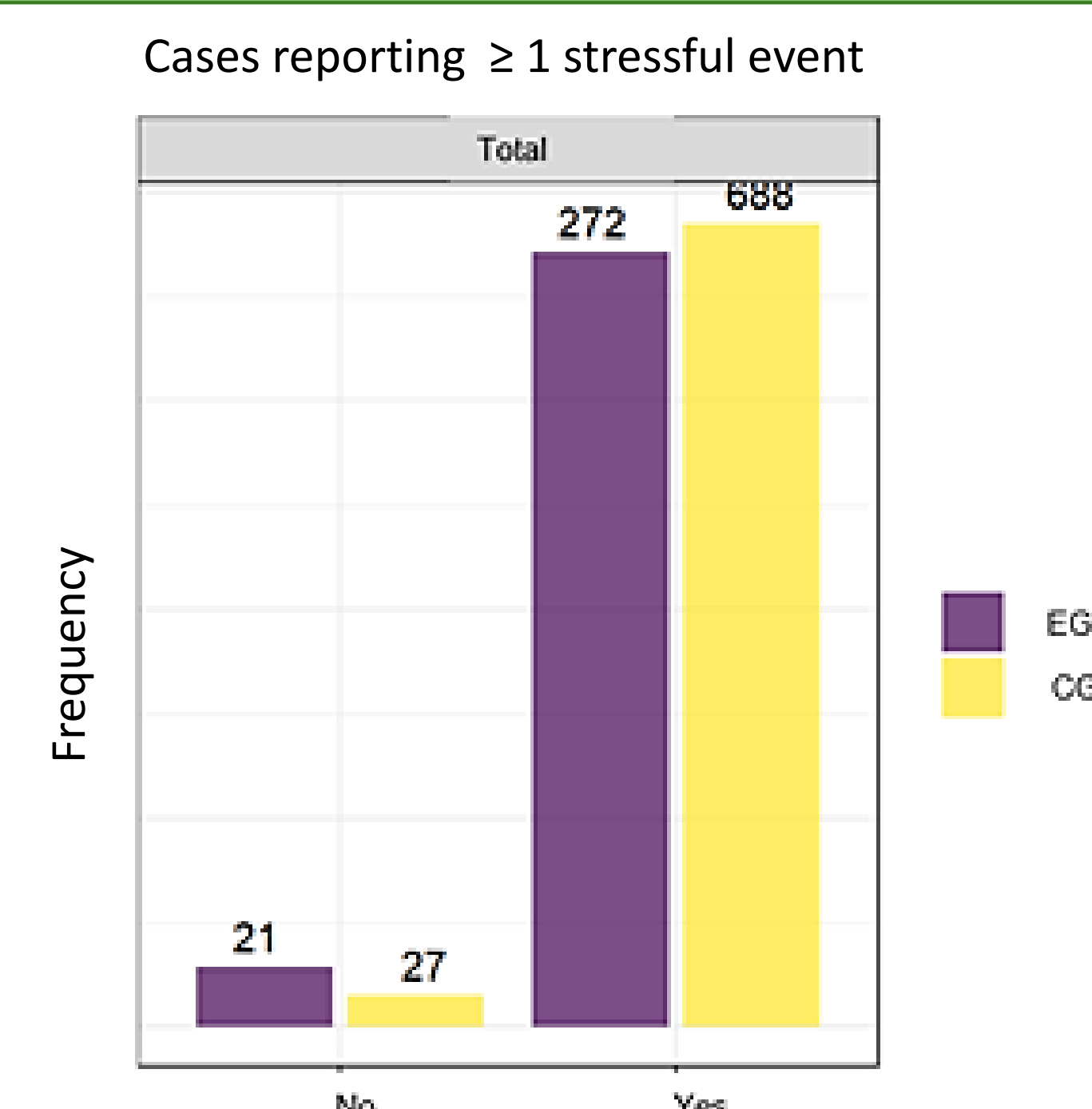
Higher rates of emotional and behavioral problems were found in the adolescents of the CG
 $p < 0.01$



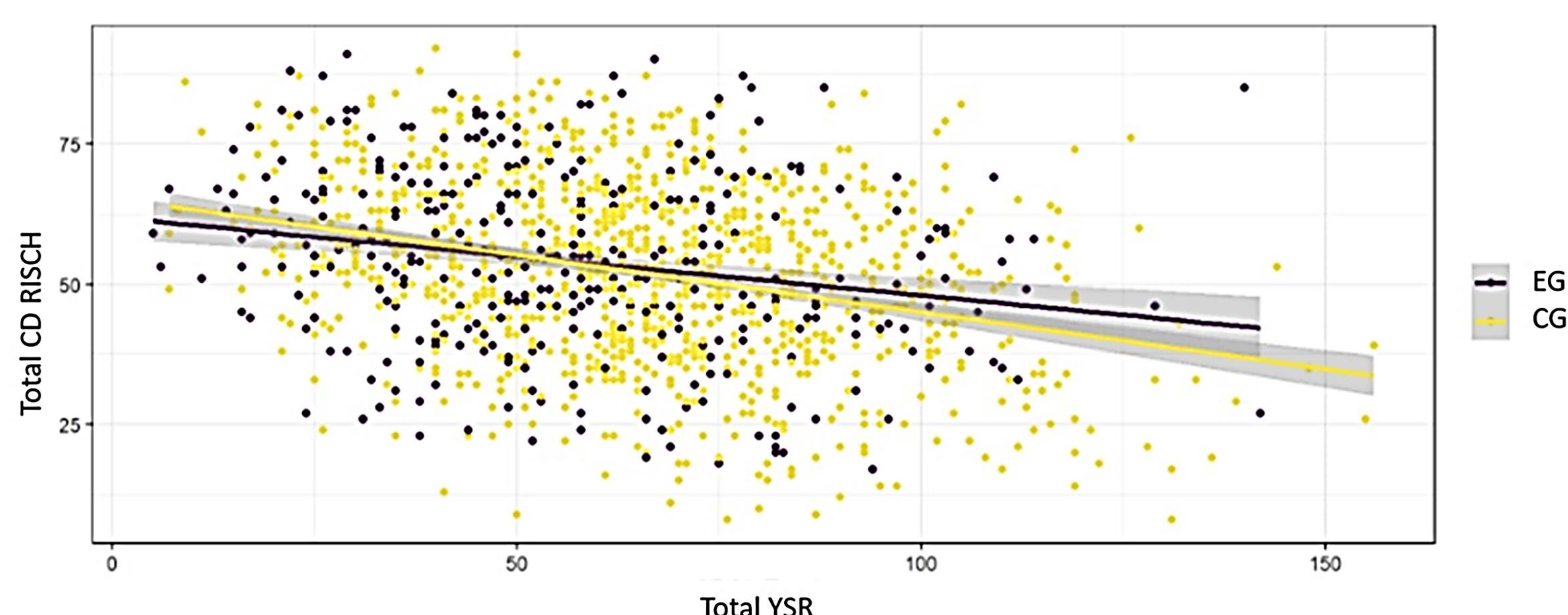
NO differences in the CD RISC total
 $p > 0.05$



CG reported a higher percentage of stressful events than the EG
 $p < 0.01$



The inverse correlation between the total YSR and CD-RISC was significant for both groups.
 $p < 0.01$



CONCLUSION

CG had higher levels of psychopathology than the EG and reported a higher number of traumatic events. This suggests that the presence of headache may be a protective factor for the onset of psychopathology and helps shed light on the high psychic distress of adolescents that goes unnoticed and remains unseen.